

Parcel	Division	Lot	Feet	Road
15-4.0-18-003-002-028.000	Division 1	10	75	N. Sunset
15-4.0-18-003-002-027.000	Division 1	12	75	N. Sunset
15-4.0-18-003-002-011.000	Division 1	25	75	County Ln Rd
15-4.0-18-003-002-016.000	Division 1	34	75	N. Sunset
15-4.0-18-003-002-012.000	Division 1	27,29	150	County Ln Rd
15-4.0-18-003-005-004.000	Division 1	69	200	N Millstone

-- 2nd Sub-Division --

Parcel	Division	Lot	Feet	Road
15-4.0-19-002-012-015.000	Division 2	59	75	County Line Rd
15-4.0-19-002-012-033.000	Division 2	76	75	S. Sunset
15-4.0-19-002-013-017.000	Division 2	145	75	S. Sunset
15-4.0-19-002-008-021.000	Division 2	234	75	N. Hazelwood
15-4.0-19-002-008-018.000	Division 2	240	75	N. Hazelwood
15-4.0-19-002-007-028.000	Division 2	294	75	N. Millstone
15-4.0-19-002-012-042.000	Division 2	44	75	S. Sunset
<b>Sub-Division Totals</b>				
15-4.019-002-012-007.000	Division 2	47	25	County Line Rd
15-4.0-19-002-010-042.000	Division 2	86	75	N. Lindenwood

..2nd Sub-Division..



--4th Sub-Division--

Parcel	Division	Lot	Feet	Road
15-4.0-19-002-006-030.000	Division 4	13	25	Ivy
15-4.0-19-002-005-005.000	Division 4	35	25	Ivy
15-4.0-19-002-005-006.000	Division 4	37	25	Ivy
15-4.0-19-002-005-007.000	Division 4	38	25	Ivy
15-4.0-19-002-005-043.000	Division 4	48	75	N. Millwood
15-4.0-19-002-004-008.000	Division 4	118	75	N. Millwood
15-4.0-19-002-003-016.000	Division 4	193	75	N. Rosewood
15-4.0-19-002-019-028.000	Division 4	211	75	S. Rosewood
15-4.0-19-002-002-024.000	Division 4	251	75	Stoneridge
15-4.0-19-002-020-024.000	Division 4	295	75	Deerrun
15-4.0-19-002-001-001.000	Division 4	311	75	Hillside
15-4.0-19-002-001-010.000	Division 4	330	75	Stoneridge
15-4.0-19-002-005-017.000	Division 4	051	25	Ivy
15-4.0-19-002-005-025.000	Division 4	062	25	Ivy
15-4.0-19-002-019-031.000	Division 4	205	75	N. Rosewood
15-4.0-19-002-001-015.000	Division 4	339	75	Hillside
15-4.0-19-002-006-036.000	Division 4	005	25	Ivy
15-4.0-19-002-004-018.000	Division 4	123	75	N. Heatherwood

--4th Sub-Division--

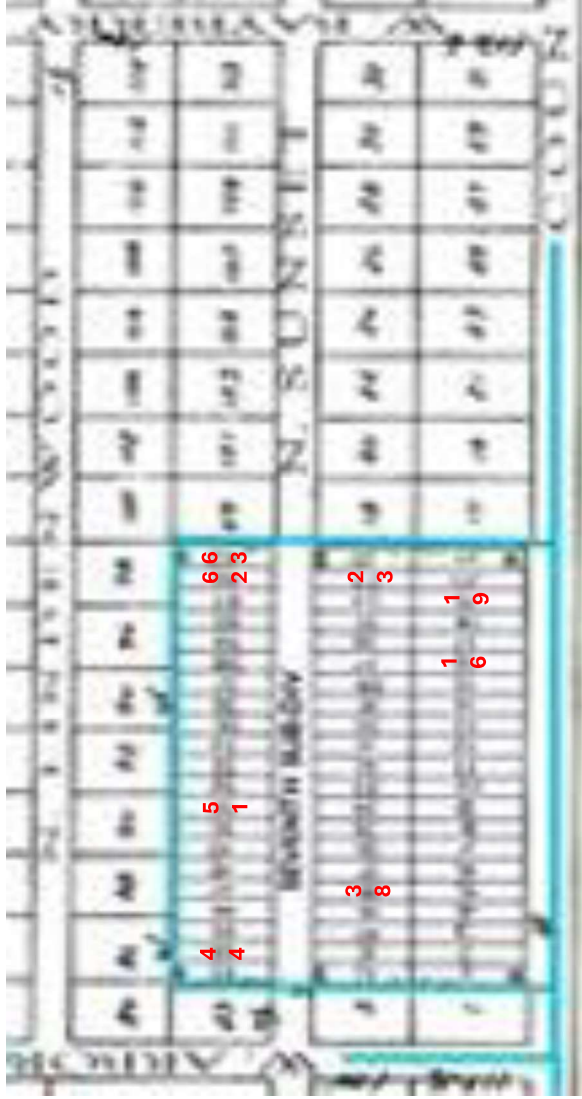


-- 5th Sub-Division --



Parcel	Division	Lot	Feet	Road
15-4.0-18-003-006-021.000	Division 5	20	90	N. Heatherwood
15-4.0-18-003-006-003.000	Division 5	5	90	N. Millwood
15-4.0-18-003-008-005.000	Division 5	75	90	N. Rosewood
15-4.0-18-003-008-008.000	Division 5	81	90	N. Rosewood
15-4.0-18-003-010-021.000	Division 5	107	90	N. Hillside
15-4.0-18-003-008-006.000	Division 5	77	90	N. Rosewood
15-4.0-18-003-010-015.000	Division 5	119	90	N Hillside

Parcel	Division	Lot	Feet	Road
15-4.0-19-002-011-017.000	Division 7	16	25	Countyline Road
15-4.0-19-002-011-020.000	Division 7	19	25	Countyline Road
15-4.0-19-002-011-049.000	Division 7	38	25	N. Sunset
15-4.0-19-002-010-003.000	Division 7	44	25	N. Sunset
15-4.0-19-002-010-010.000	Division 7	51	25	N. Sunset
15-4.0-19-002-010-021.000	Division 7	62	25	N. Sunset
15-4.0-19-002-010-022.000	Division 7	63	25	N. Sunset
15-4.0-19-002-011-036.000	Division 7	23	25	N Sunset



7<sup>th</sup> Sub-Division